



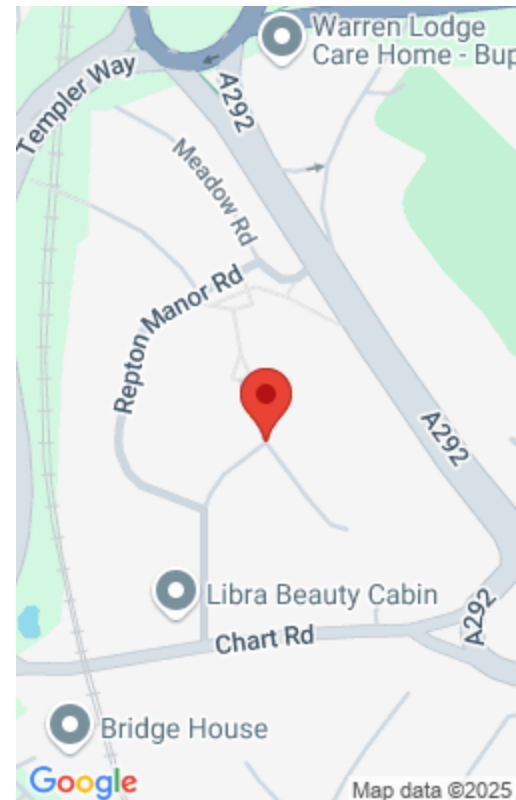
£315,000

### 3 BED SEMI-DETACHED HOUSE FOR SALE LITTLEBROOK ROAD, ASHFORD TN23

<https://yetihomes.co.uk>

- 3 beds
- 1 bath
- For sale

Yeti Homes Estate Agent are delighted to offer to the sale market of Ashford chain free this beautiful three double bedroom semi-detached property located in Cul-de-Sac area of highly desired residential area of Repton Manor, Ashford. Walking inside the property, you are welcomed by a spacious hallway leading onto the living room featuring an iconic [...]



---

## Basics

**Category:** For sale

**Bathrooms:** 1 bath

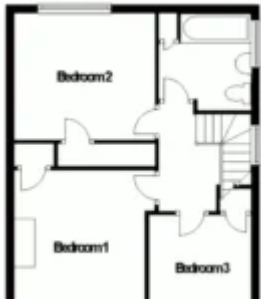
**Reception:** 2

**Bedrooms:** 3 beds

**Floor level:** 2

---

## Floor Plans



---

## Nearby Schools

**High School:** Ashford, St Mary's Church of England Primary School, Highworth Grammar School, St Teresa's Catholic Primary School, Repton Manor Primary School

